



Vigo Primary Newsletter

Newsletter Number 01 - 6 September 2024

Message From
Mrs Dance

Dear Parents and Carers,

Welcome back to the new academic year. I really hope that you all had a wonderful summer holiday.

The school was a hive of activity during August, with lots of building work and projects taking place. We now have a new car park, meeting rooms and IT infrastructure. The staff team worked tirelessly over the summer to develop and enhance the school environment. This was recognised on Wednesday when we welcomed our Local Authority, LLP (Leading Learning Partner) in. She was very impressed not only with the school environment but also the children's behaviour both in and outside of the classroom. The children were polite, respectful and looked really smart in their uniforms.

A gentle reminder that plain, black shoes/trainers are the only footwear to be worn with an exception for Forest school and PE days. If you have difficulty purchasing the school uniform, please contact the school office so that we can support where we can.

A HUGE CONGRATULATIONS to Harley, in Year 5, who is returning to school as a Kick Boxing World Champion! She won all her fights securing a place in the final and then fought the hardest she could and snatched the win!

It has been a fantastic start to the school year. I am looking forward to working with you all again this year. Our first Parent Forum meeting of the term will be held on Monday 16th September at 5:30pm. Please do contact your year group Parent Rep if you wish them to bring any ideas or suggestions to the meeting.

Wishing you all a lovely weekend.

Rachel Dance

Headteacher

"Just imagine how different the world could be if we all spoke to everyone with respect and kindness."

Holly Branson

Attendance
Important Information

**Whole School attendance
this year 95.86%**

Please think carefully before keeping your child away from school.

As parents and carers you have a responsibility to inform the school before 9.00am if your child will not be in school, this can be done via the email address **attendance@vigo.hants.sch.uk** or by calling the school and selecting option 1.

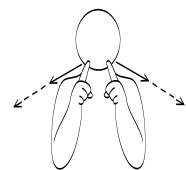
[More about attendance at Vigo >>](#)

Sign of the Week

There are two signs for this week



This is the sign for
school



This is the sign for
teacher

ask your child to sign them with you

Malala Yousafzai:

0

Rosa Parks:

0

Anne Frank:

0

Nick Vujicic:

0

PE Timetable Autumn Term 1

Please ensure you send your children into school in PE kit on the following days:

- Year R - Wednesday
- Year 1 - Wednesday and Thursday
- Year 2 - Friday and Tuesday
- Year 3 - Tuesday and Monday
- Year 4 - Tuesday and Friday
- Year 5 - Friday and Wednesday
- Year 6 - Thursday and Monday

Flu Vaccine information

Each winter in the UK, thousands of children who do not have a health condition need hospital care because of flu.

We will again be working with the NHS so that the Hampshire School Nursing team can administer the flu vaccine to all our children this year.

We will send all the details about how you can give permission, and when the team will be in school as soon as we have it.

If you would like more information about the flu vaccine please follow this link:

[Children's flu vaccine - NHS \(www.nhs.uk\)](http://www.nhs.uk)

Wet Weather

Please can you ensure that children have a coat suitable for the weather conditions each day.

We will always try and get the children outside at breaks and lunchtimes, even if it is cold or wet.

VIGO PRIMARY SCHOOL OFFICE

| DAY | OPENING TIMES |
|-----------|-----------------|
| MONDAY | 8:30am – 3:45pm |
| TUESDAY | 8:30am – 3:45pm |
| WEDNESDAY | 8:30am – 3:45pm |
| THURSDAY | 8:30am – 3:45pm |
| FRIDAY | 8:30am – 3:45pm |

The school office and telephone lines are staffed during the above opening times. Outside of these times you can call the school office and leave a message on 01264 365166 or email to adminoffice@vigo.hants.sch.uk. Messages are checked daily during term time.

Plant to Plate



Would you like to grow your own vegetables?

Do you have limited space?

Would you like to learn how?

Contact our community team to get involved in this fantastic new project!

VIVID



03304 004 116



info@unityonline.org.uk

Free planting equipment available!

www.unityonline.org.uk

Registered Company no: 3332003 Registered Charity no: 1061655

No Vaping or Smoking

Can we please remind all adults that the entirety of Vigo and Norman Gate School grounds are No Smoking and No Vaping areas. Thank you.



Assemblies

Please can all parents/carers remember **NO** photographs or videos **during** assemblies. We will give you time at the end.



WINTON COMMUNITY ACADEMY

Rated Good by Ofsted March 2023

| | | | |
|---|--|---|--|
| <p>HAPPY</p> <ul style="list-style-type: none"> Dedicated transition team who work closely with primary schools, students and parents as part of our extensive induction programme. | <p>CREATIVE</p> <ul style="list-style-type: none"> Outstanding reputation in the Visual and Performing Arts. | <p>SUCCESSFUL</p> <ul style="list-style-type: none"> Excellent progress and attainment. | <p>INDIVIDUAL</p> <ul style="list-style-type: none"> A culture of support, respect and safety where every child matters. |
|---|--|---|--|

OPEN EVENING

Thursday 12th September 2024
5.00pm - 7.00pm

Morning tours available from the 7th - 9th October. To book a place please call main reception, Winton Community Academy, London Road, Andover, Hampshire, SP10 2PS Tel: 01264 351822



About Vigo >>

Key Information >>

News and Events >>

Parents >>

Children >>

**Hampshire School Terms and Holidays
2024 – 2025**

Determined programme of school term and holiday dates for county and controlled schools for the academic year 2024/25

| SEPTEMBER 2024 | | | | | |
|----------------|----|----|----|----|----|
| M | 26 | 2* | 9 | 16 | 23 |
| T | 27 | 3 | 10 | 17 | 24 |
| W | 28 | 4 | 11 | 18 | 25 |
| T | 29 | 5 | 12 | 19 | 26 |
| F | 30 | 6 | 13 | 20 | 27 |
| S | 31 | 7 | 14 | 21 | 28 |
| S | 1 | 8 | 15 | 22 | 29 |

| OCTOBER 2024 | | | | | |
|--------------|----|----|----|----|----|
| M | 30 | 7 | 14 | 21 | 28 |
| T | 1 | 8 | 15 | 22 | 29 |
| W | 2 | 9 | 16 | 23 | 30 |
| T | 3 | 10 | 17 | 24 | 31 |
| F | 4 | 11 | 18 | 25 | |
| S | 5 | 12 | 19 | 26 | |
| S | 6 | 13 | 20 | 27 | |

| NOVEMBER 2024 | | | | | |
|---------------|---|----|----|----|----|
| M | 4 | 11 | 18 | 25 | |
| T | 5 | 12 | 19 | 26 | |
| W | 6 | 13 | 20 | 27 | |
| T | 7 | 14 | 21 | 28 | |
| F | 1 | 8 | 15 | 22 | 29 |
| S | 2 | 9 | 16 | 23 | 30 |
| S | 3 | 10 | 17 | 24 | |

| DECEMBER 2024 | | | | | |
|---------------|---|----|-----|----|----|
| M | 2 | 9 | 16 | 23 | |
| T | 3 | 10 | 17 | 24 | |
| W | 4 | 11 | 18 | 25 | |
| T | 5 | 12 | 19 | 26 | |
| F | 6 | 13 | 20* | 27 | |
| S | 7 | 14 | 21 | 28 | |
| S | 1 | 8 | 15 | 22 | 29 |

| JANUARY 2025 | | | | | |
|--------------|----|----|----|----|----|
| M | 30 | 6* | 13 | 20 | 27 |
| T | 31 | 7 | 14 | 21 | 28 |
| W | 1 | 8 | 15 | 22 | 29 |
| T | 2 | 9 | 16 | 23 | 30 |
| F | 3 | 10 | 17 | 24 | 31 |
| S | 4 | 11 | 18 | 25 | |
| S | 5 | 12 | 19 | 26 | |

| FEBRUARY 2025 | | | | | |
|---------------|---|----|----|----|--|
| M | 3 | 10 | 17 | 24 | |
| T | 4 | 11 | 18 | 25 | |
| W | 5 | 12 | 19 | 26 | |
| T | 6 | 13 | 20 | 27 | |
| F | 7 | 14 | 21 | 28 | |
| S | 1 | 8 | 15 | 22 | |
| S | 2 | 9 | 16 | 23 | |

| MARCH 2025 | | | | | |
|------------|---|----|----|----|----|
| M | 3 | 10 | 17 | 24 | |
| T | 4 | 11 | 18 | 25 | |
| W | 5 | 12 | 19 | 26 | |
| T | 6 | 13 | 20 | 27 | |
| F | 7 | 14 | 21 | 28 | |
| S | 1 | 8 | 15 | 22 | 29 |
| S | 2 | 9 | 16 | 23 | 30 |

| APRIL 2025 | | | | | |
|------------|----|----|----|-----|----|
| M | 31 | 7 | 14 | 21 | 28 |
| T | 1 | 8 | 15 | 22* | 29 |
| W | 2 | 9 | 16 | 23 | 30 |
| T | 3 | 10 | 17 | 24 | |
| F | 4* | 11 | 18 | 25 | |
| S | 5 | 12 | 19 | 26 | |
| S | 6 | 13 | 20 | 27 | |

| MAY 2025 | | | | | |
|----------|---|----|----|----|----|
| M | 5 | 12 | 19 | 26 | |
| T | 6 | 13 | 20 | 27 | |
| W | 7 | 14 | 21 | 28 | |
| T | 1 | 8 | 15 | 22 | 29 |
| F | 2 | 9 | 16 | 23 | 30 |
| S | 3 | 10 | 17 | 24 | 31 |
| S | 4 | 11 | 18 | 25 | |

| JUNE 2025 | | | | | |
|-----------|---|----|----|----|----|
| M | 2 | 9 | 16 | 23 | |
| T | 3 | 10 | 17 | 24 | |
| W | 4 | 11 | 18 | 25 | |
| T | 5 | 12 | 19 | 26 | |
| F | 6 | 13 | 20 | 27 | |
| S | 7 | 14 | 21 | 28 | |
| S | 1 | 8 | 15 | 22 | 29 |

| JULY 2025 | | | | | |
|-----------|----|----|----|-----|----|
| M | 30 | 7 | 14 | 21 | 28 |
| T | 1 | 8 | 15 | 22* | 29 |
| W | 2 | 9 | 16 | 23 | 30 |
| T | 3 | 10 | 17 | 24 | 31 |
| F | 4 | 11 | 18 | 25 | |
| S | 5 | 12 | 19 | 26 | |
| S | 6 | 13 | 20 | 27 | |

| AUGUST 2025 | | | | | |
|-------------|---|----|----|----|----|
| M | 4 | 11 | 18 | 25 | |
| T | 5 | 12 | 19 | 26 | |
| W | 6 | 13 | 20 | 27 | |
| T | 7 | 14 | 21 | 28 | |
| F | 1 | 8 | 15 | 22 | 29 |
| S | 2 | 9 | 16 | 23 | 30 |
| S | 3 | 10 | 17 | 24 | 31 |

| Bank and Public Holidays 2024/25 | | | |
|----------------------------------|------------------|---------------------|----------------|
| Christmas Day | 25 December 2024 | Easter Monday | 21 April 2025 |
| Boxing Day | 26 December 2024 | May Day Holiday | 5 May 2025 |
| New Year's Day | 1 January 2025 | Spring Bank Holiday | 26 May 2025 |
| Good Friday | 18 April 2025 | Summer Bank Holiday | 25 August 2025 |

* First day after break
Last day before break

 School Holidays  Bank Holidays and National Holidays
 Inset Days